

Cluana

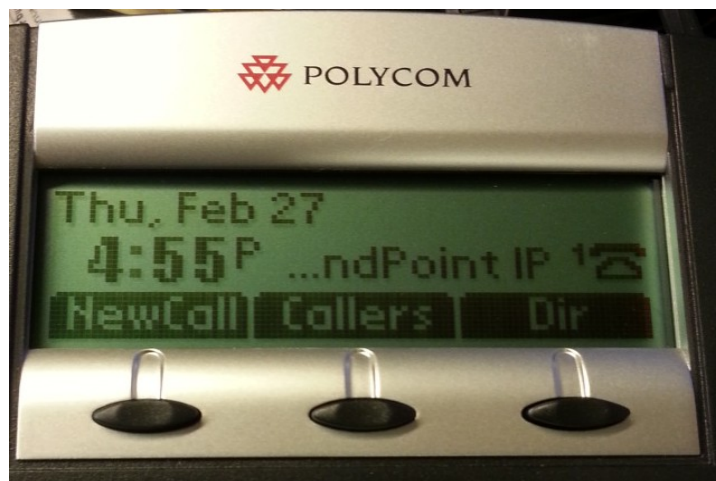
Polycom Soundpoint IP 331 Configuration guide

This guide is for a Polycom IP phone SoundPoint IP 331, UC Software Version 4.0.4.2906 only. Different models and / or software versions may require different settings.

IP address detection and web management

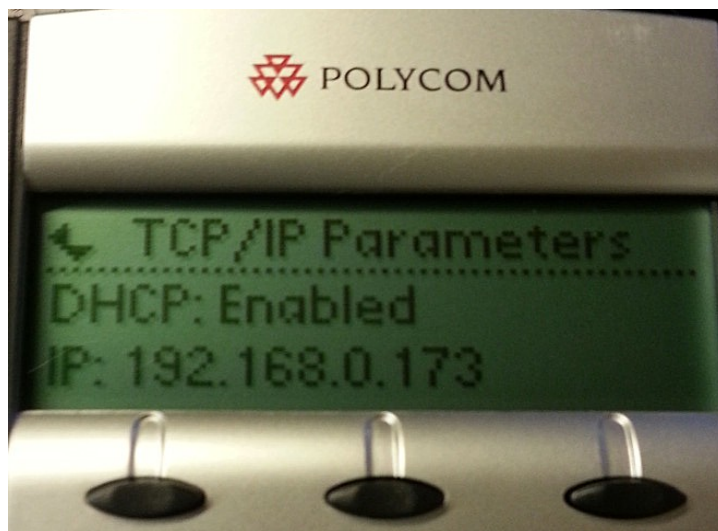
Assuming a DHCP server is active on your network,

- connect a network cable to your phone LAN port
- power up the phone by plugging the power cable (no need to, if you are using a PoE switch)
- wait for your phone to finish the booting process. It should show a date and time on the upper left (fig.1)



(fig. 1)

- press "Menu" button, then "2", "2", "1". You should see the assigned IP address, as in Fig.2 , showing the usage of IP address 192.168.0.173. Let's call it "ip_address"



(fig. 2)

- open a web browser to the URL: http://ip_address
- enter the default "456" password and press "Submit" button

IP phone configuration

Let's assume the following:

Your PBX company domain is **mycompany.com:5058** (chosen when you created your PBX account)

Your PBX hostname is **myserver.cluana.com:5058** (provided by Cluana)

Your IP Phone User ID / Auth ID is **xten** (your choice, 31 in the picture below)

Your analog adapter password is : **password** (your choice)

After login, set the following parameters :

Settings

Lines

Line 1

Identification

Address: **xten@mycompany.com**

Authentication User ID: **xten**

Authentication Password: **password**

Outbound Proxy

Address: **myserver.cluana.com**

Port: **5058**

Server 1

Address: **mycompany.com**

Port: **5058**

Expires: 120

Press "Save" button



VIEWES

Line 1

Line 2

Line 1

Identification

Display Name	Alice Atlanta
Address	33@mycompany.com
Authentication User ID	33
Authentication Password	****
Label	Alice
Type	<input checked="" type="radio"/> Private <input type="radio"/> Shared
Third Party Name	
Number of Line Keys	1
Calls Per Line	4
Ring Type	Low Trill

Outbound Proxy

Address	myserver.cluana.com
Port	5058
Transport	DNSnaptr

Server 1

Address	mycompany.com
Port	5058
Transport	DNSnaptr
Expires (s)	120
Register	<input checked="" type="radio"/> Yes <input type="radio"/> No
Retry Timeout (ms)	0
Retry Maximum Count	3
Line Seize Timeout (s)	30

Server 2

Call Diversion

Message Center

Cancel Reset to Default View Modifications Save

(fig. 3)

Settings

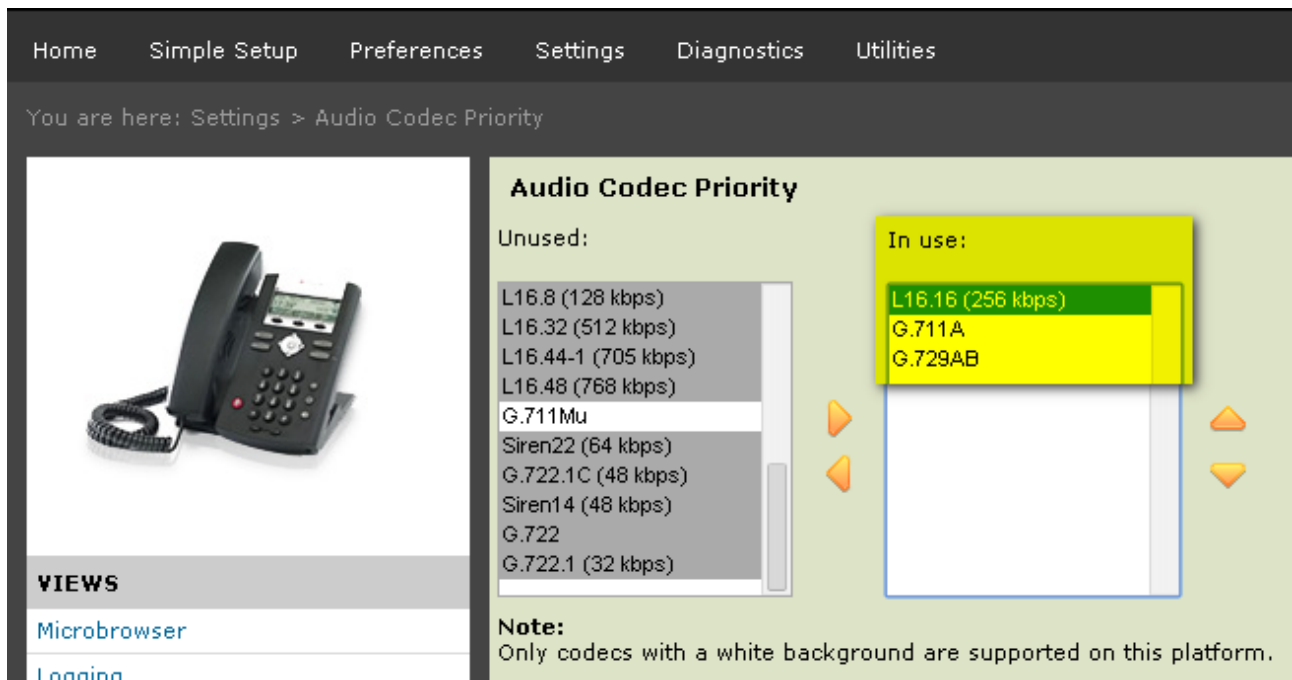
Audio codec Priority

In use

Remove all gray codecs from the “In use:” section, and add the L16.16 codec from the “Unused:” section. Reorder the “In use:” codecs so that L16.16 is first, G.711A is second (G.711Mu for USA and Japan), and G.729AB is third. (fig.4)

G.729AB is

Press “Save” button



(fig. 4)

Settings

SIP

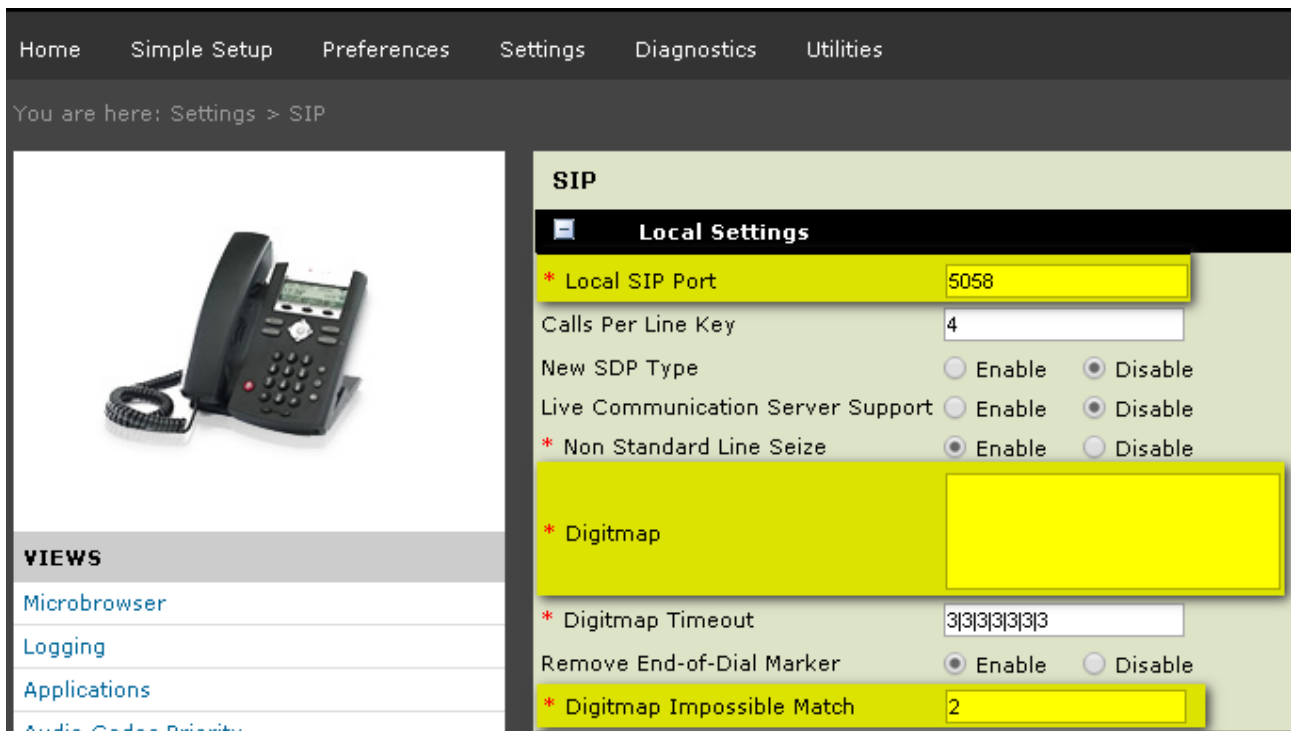
Local Settings

Local SIP port: 5058

Digitmap: empty field

Digitmap Impossible Match: 2 (fig 5)

Press “Save” button

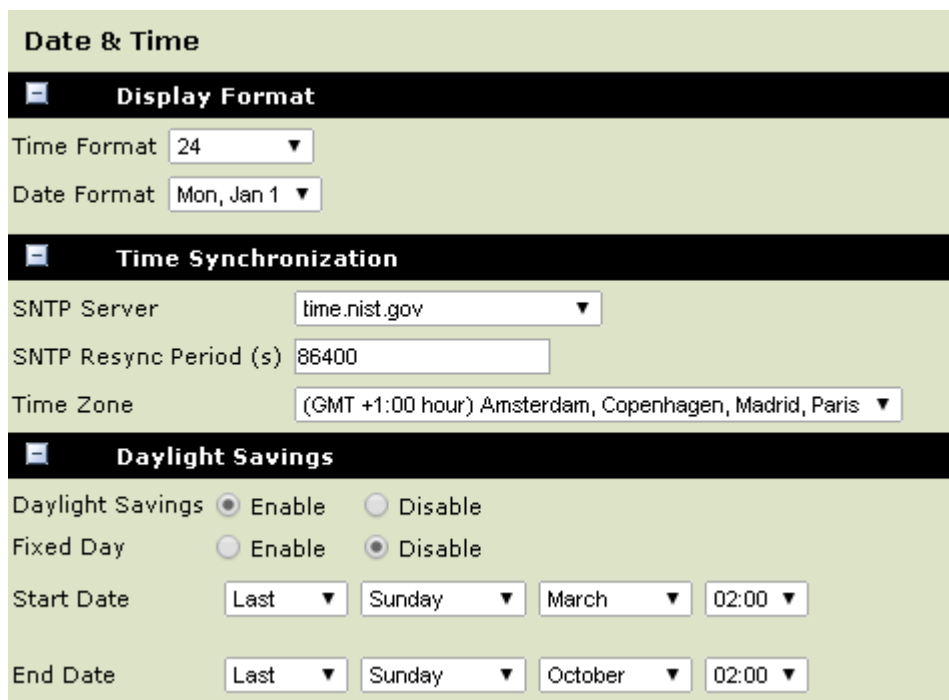


(fig. 5)

Preferences

Date & Time

Set your preferred display format, time zone, time server, resync period and daylight savings parameters. A couple of examples are provided for Italy (Fig 6) and UK (Fig 7)



(fig. 6)

Date & Time

Display Format

Time Format

Date Format

Time Synchronization

SNTP Server

SNTP Resync Period (s)

Time Zone

Daylight Savings

Daylight Savings Enable Disable

Fixed Day Enable Disable

Start Date

End Date

(fig. 7)