

Cluana

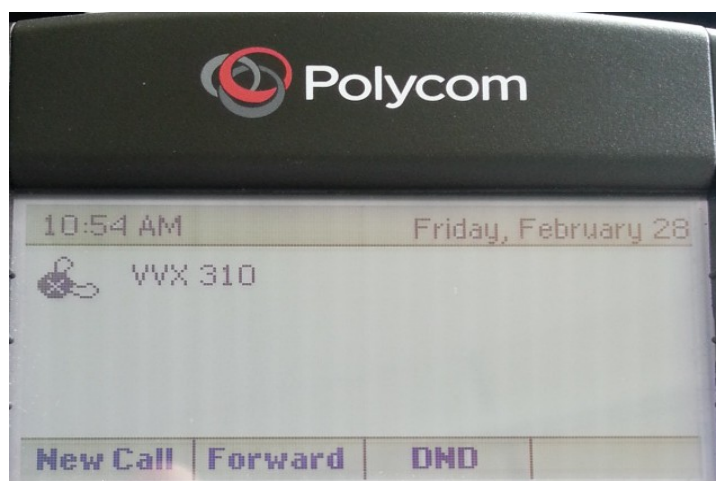
Polycom VVX310 Configuration guide

This guide is for a Polycom IP phone VVX 310, UC Software Version 4.1.6.4835 only. Different models and/or software versions may require different settings.

IP address detection and web management

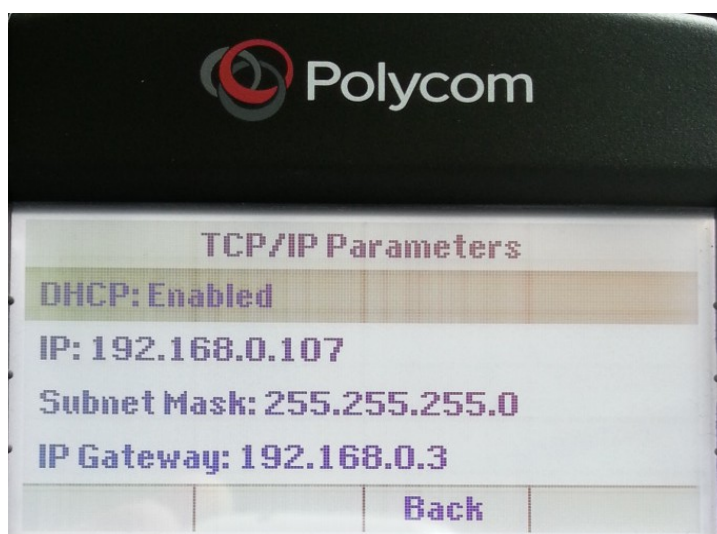
Assuming a DHCP server is active on your network,

- connect a network cable to your phone LAN port
- power up the phone by plugging the power cable (no need to, if you are using a PoE switch)
- wait for your phone to finish the booting process. It should show a date and time on the upper row (fig.1)



(fig. 1)

- press "Home" button, then right key on navigator 5 times. Press the select key to choose "Settings" option, then "4", "2", "1". You should see the assigned IP address, as in Fig.2, showing the usage of IP address 192.168.0.107. Let's call it "ip_address"



(fig. 2)

- open a web browser to the URL: http://ip_address
- insert the default "456" password and press "Submit" button

IP phone configuration

Let's assume the followings:

Your PBX company domain is **mycompany.cluana:5058** (chosen when you created your PBX account)

Your PBX hostname is **betelgeuse.cluana.com:5058** (provided by Cluana)

Your IP Phone User ID / Auth ID is **31**

Your analog adapter password is : **password**

After login, set the following parameters (fig. 3):

Settings

Lines

Line 1

Identification

Address: **31@mycompany.cluana**

Authentication

Use Login Credentials: Disable

Domain: leave empty

Authentication User ID: **31**

Authentication Password: **password**

Outbound Proxy

Address: **betelgeuse.cluana.com**

Port: **5058**

Server 1

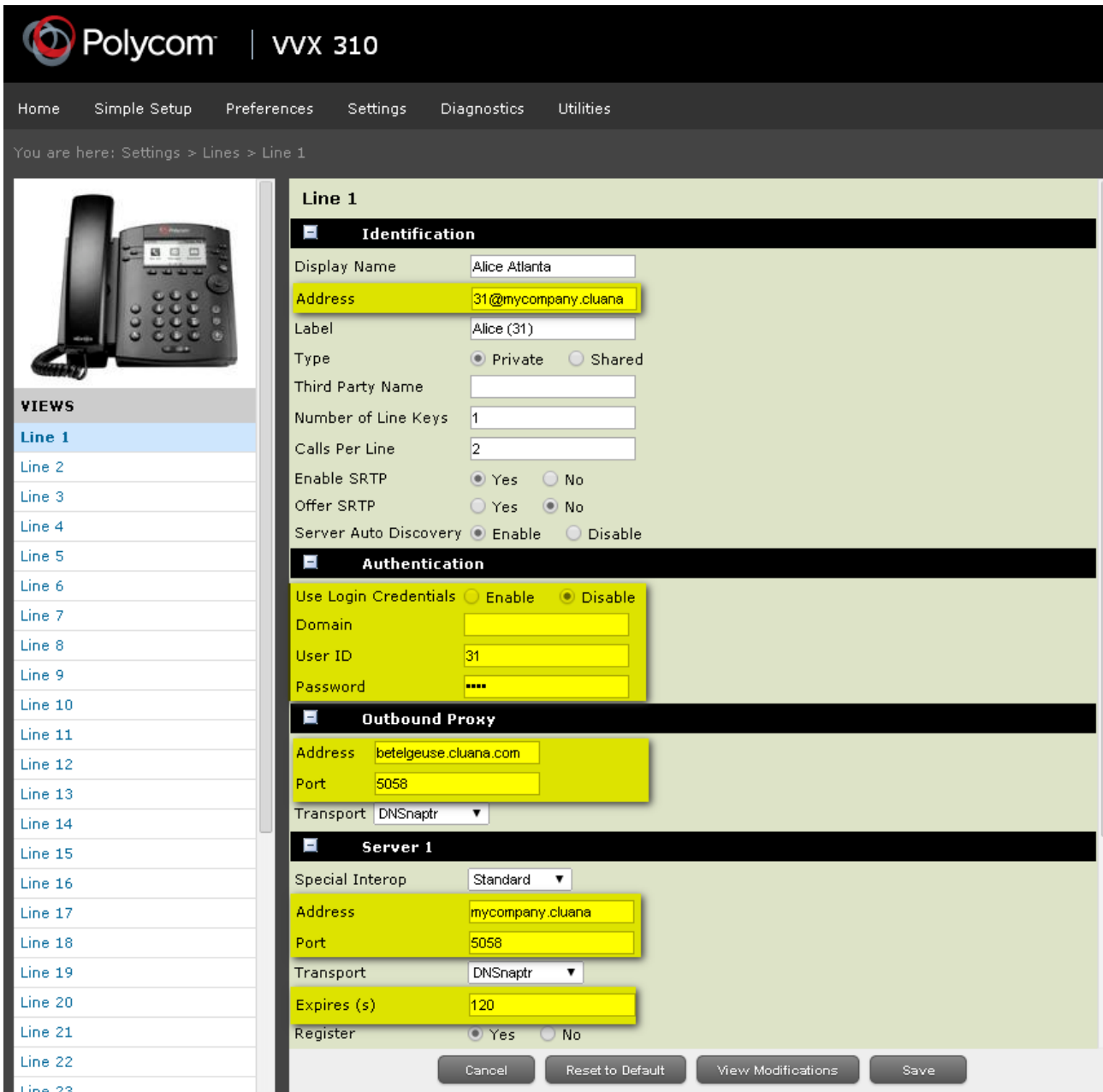
Address: **mycompany.cluana**

Port: **5058**

Expires: 120

Register: Yes

Press "Save" button



(fig. 3)

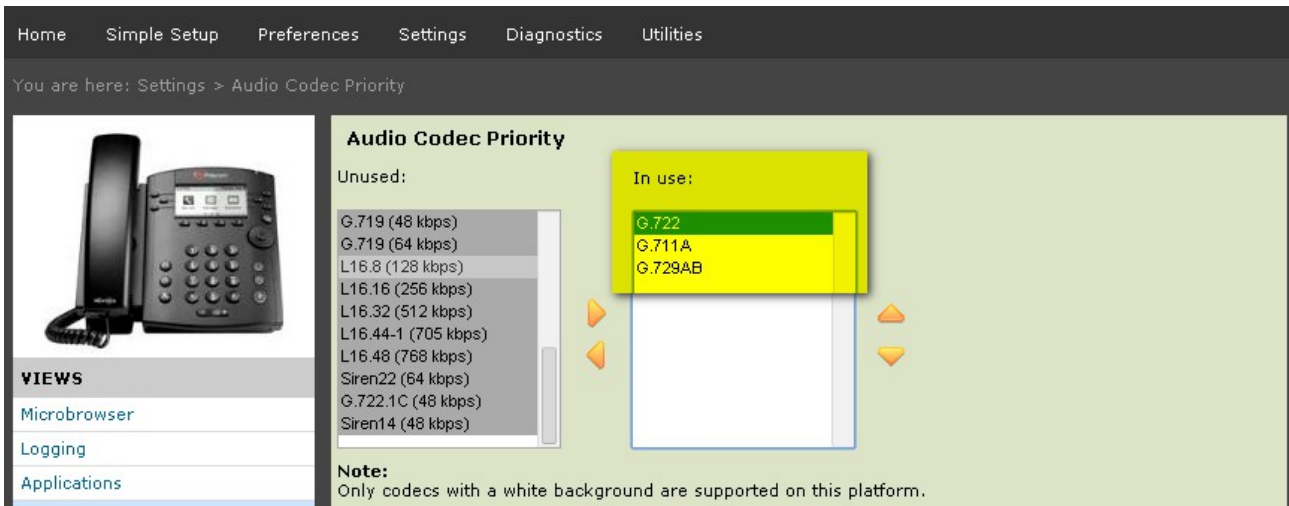
Settings

Audio codec Priority
In use

Remove all gray codecs from the “In use:” section, and add the G.722 codec from the “Unused:” section. Reorder the “In use:” codecs so that G.722 is first, G.711A is second (G.711Mu for USA and Japan), third. (fig.4)

G.729AB is

Press “Save” button



(fig. 4)

Settings

SIP

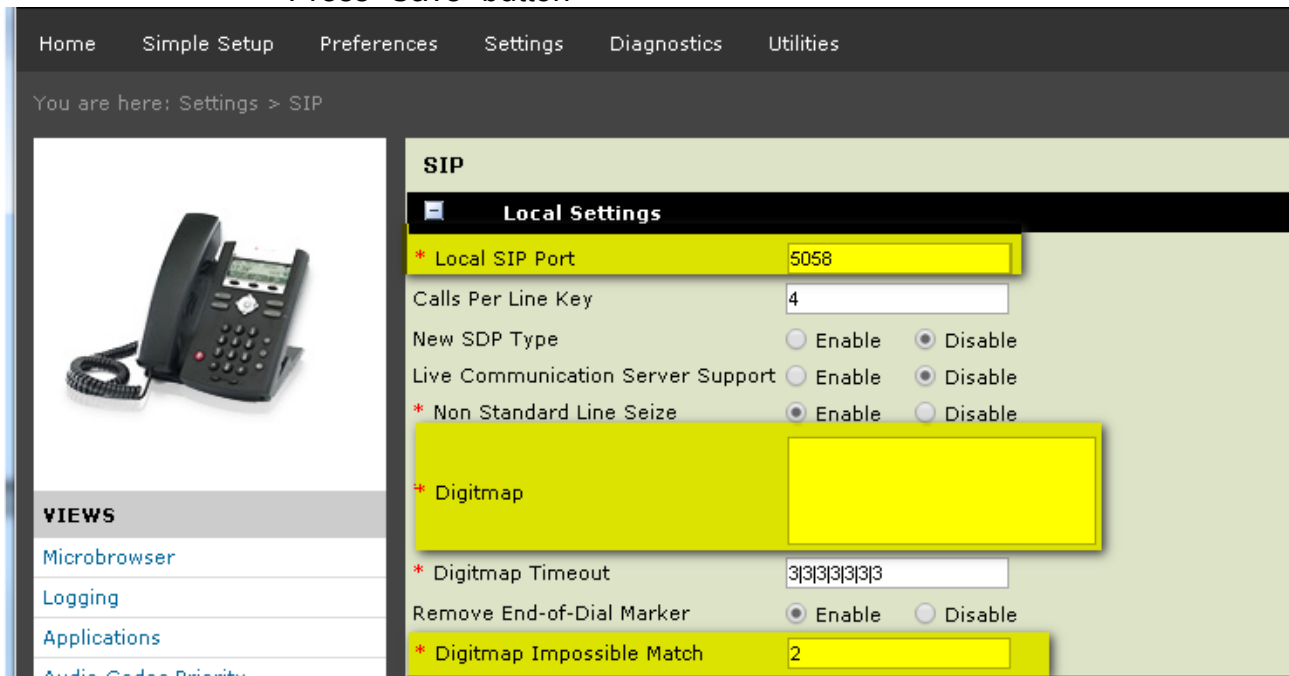
Local Settings

Local SIP port: 5058

Digitmap: empty field

Digitmap Impossible Match: 2 (fig 5)

Press "Save" button



(fig. 5)

Preferences

Date & Time

Set your preferred display format, time zone, time server, resync period and daylight savings parameters. A couple of examples are provided for Italy (Fig 6) and UK (Fig 7)

The screenshot shows a 'Date & Time' preferences window with three main sections:

- Display Format:** Time Format is set to '24' and Date Format is set to 'Mon, Jan 1'.
- Time Synchronization:** SNTP Server is 'time.nist.gov', SNTP Resync Period (s) is '86400', and Time Zone is '(GMT +1:00 hour) Amsterdam, Copenhagen, Madrid, Paris'.
- Daylight Savings:** Daylight Savings is 'Enable', Fixed Day is 'Disable'. Start Date is 'Last Sunday March 02:00' and End Date is 'Last Sunday October 02:00'.

(fig. 6)

Date & Time

Display Format

Time Format

Date Format

Time Synchronization

SNTP Server

SNTP Resync Period (s)

Time Zone

Daylight Savings

Daylight Savings Enable Disable

Fixed Day Enable Disable

Start Date

End Date

(fig. 7)